



2015/2016 Year in Review



Powered by
Partnership



Table of Contents

- 3 Letter from the Chair, CEO and President**
- 4 Our Circle of Collaboration**
- 6 D.C. Wards 7 and 8**
 - Partnerships in Early Learning
 - Partnerships in Wrap-Around Support
 - Partnerships in Knowledge Building
- 19 Seventh-day Adventist Education Initiatives**
- 21 Family Philanthropy**
 - Legacy of Our Founders
 - Global Impact
 - Local Impact
- 26 Board of Directors and Senior Leadership**
- 27 Connect With Us**

Powered by Partnership

Our logo represents a circle of collaboration. It's the core of our identity in terms of how we approach problems, how we seek solutions and how we work to generate results.

Two years ago, the Bainum Family Foundation set a new strategic direction that includes bold aspirations about how we can help children, families and communities. We know that we can't do this alone. That's why we seek passionate partners to work side by side with us. Partners who have proven expertise. Partners who are effective. Partners who share our commitment to helping children thrive.

In 2016 – our 48th year of operation – we put this new strategy into action. And we began to build a new circle of collaboration. That's why our 2015/2016 Year in Review focuses on the many outstanding partners who make our work possible, and the progress we have made together over the past year. We know you will enjoy meeting them as much as we enjoy collaborating with them to help children find long-term success in school, careers and their personal lives.

Barbara Bainum

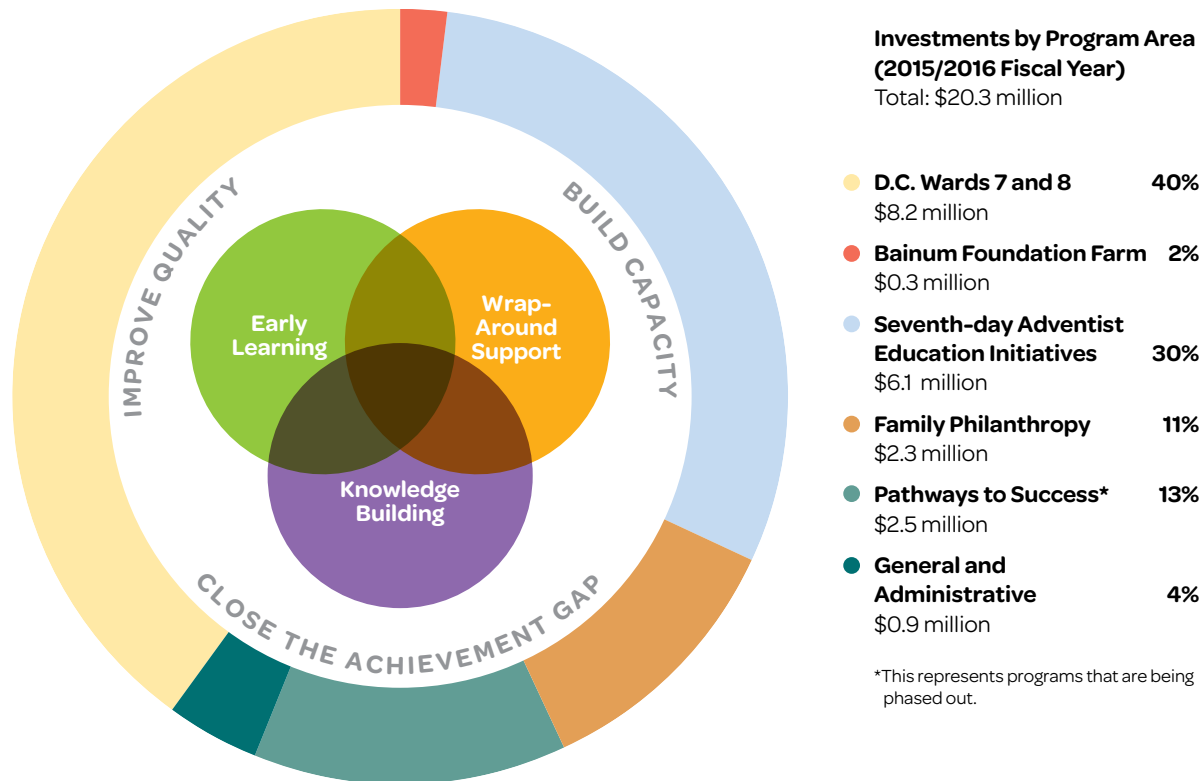
Barbara Bainum, LCSW-C
Chair of the Board, CEO and President
Bainum Family Foundation



Our Circle of Collaboration

The **Bainum Family Foundation** is a private operating foundation, which means that we both directly operate (using our own staff, facilities and partnerships) and fund (through other organizations) programs that align with our mission: to support educational programs and projects assisting underserved children and youth, from early childhood through post-secondary education.

Our investments reflect our three areas of focus – **Early Learning, Wrap-Around Support** and **Knowledge Building** – and are intended to **improve quality, build capacity** and **close the achievement gap** for children living in poverty.



D.C. Wards 7 and 8

In collaboration with our partners, we ensure that children and families living in poverty in the District of Columbia’s Wards 7 and 8 have access to high-quality, comprehensive early childhood programs that are evidence-based and reflect the latest brain science. We also are providing a continuum of high-quality, school-based supports for children beyond the earliest years of their lives, including mental wellness and nutrition.

Bainum Foundation Farm

A gift of 263 acres of Virginia farmland from the Bainum family gave us the opportunity to address food insecurity in Wards 7 and 8 in a meaningful way. We want to improve access to healthy food for families. We are doing this by growing produce for distribution and supporting nutrition education and community outreach efforts to ensure that produce availability translates to consumption.

Seventh-day Adventist Education Initiatives

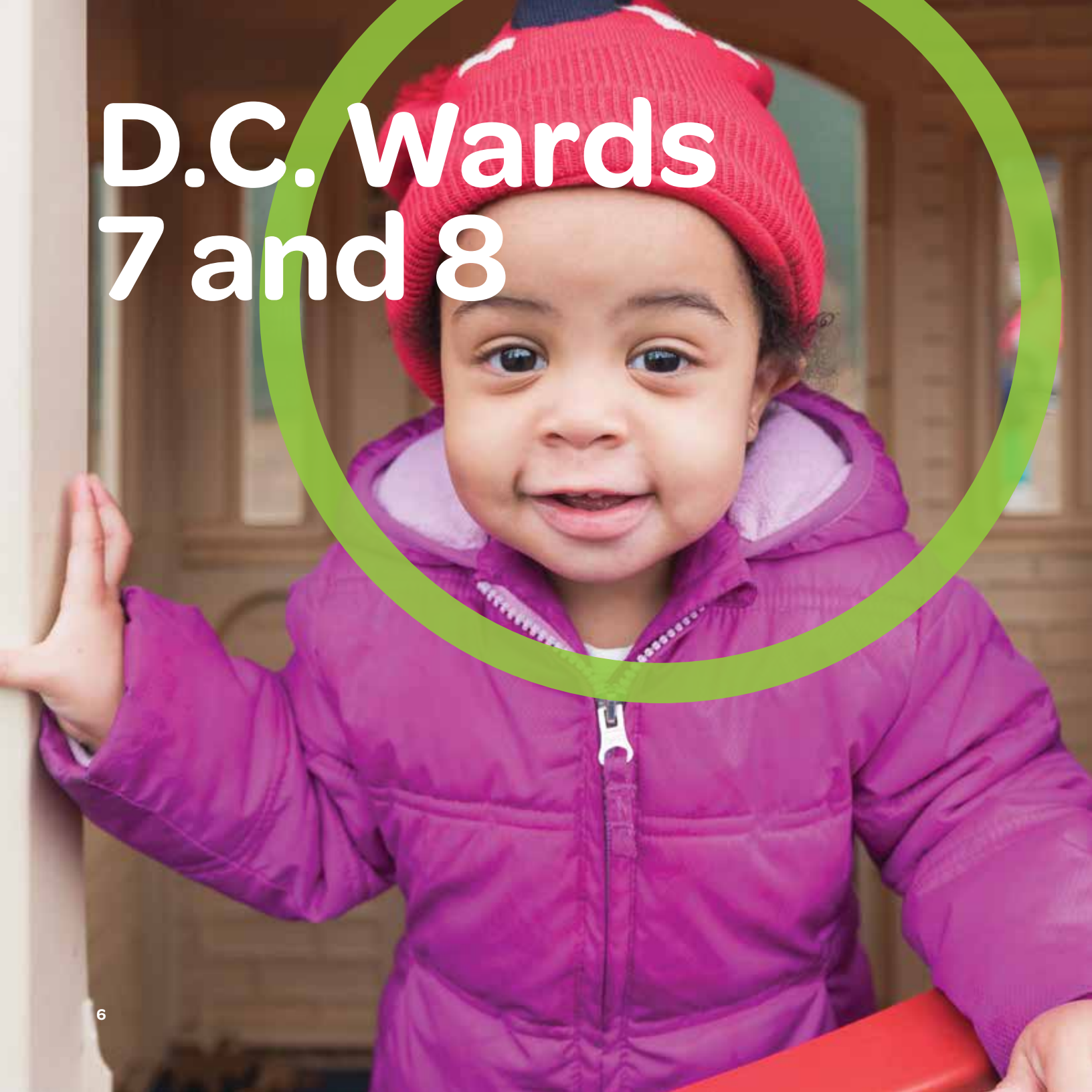
The Foundation continues to support Seventh-day Adventist schools to honor our founder’s commitment to faith-based education. While that support once consisted largely of giving students scholarships to faith-based boarding and day schools, it now aligns more closely to our overall strategy, focused on knowledge sharing and capacity building at the schools themselves.

Family Philanthropy

Four generations of Bainum family members – from the founding generation through their great-grandchildren – are involved in continuing this family legacy through a range of family philanthropy initiatives at the Foundation.



D.C. Wards 7 and 8



Partnerships in Early Learning

Working with a range of partners, our goal is to increase the number of high-quality early learning seats for infants and toddlers in the District of Columbia's Wards 7 and 8 by 750 by 2020. Our work addresses:

Practice

Helping early learning providers deliver evidence-based infant and toddler care, and increasing community supports for children

Policy

Engaging policy/advocacy partners to ensure that public funding and regulation provides quality and sustainable early learning and wrap-around supports for infants and toddlers and their families

Research

Conducting and supporting research that identifies innovations and how to scale them, as well as evaluating our services and measuring our impact



PRACTICE: Converting Existing Seats to High Quality

The Foundation is working with the District of Columbia's **Office of the State Superintendent of Education (OSSE), Division of Early Learning**, to convert existing early learning seats to high quality through a Quality Improvement Network (QIN), and together we have made high-quality resources available to providers through the Early Childhood Share DC portal.

Quality Improvement Network

Services are delivered through three hub agencies – CentroNía, Mary's Center and United Planning Organization (UPO) – to 12 child care centers and 17 family home providers. The hubs provide professional development and technical assistance, and also deliver the comprehensive services required by Head Start. Participating providers also receive funding for facility enhancements.

Early Childhood Share DC

Provided at no cost to all licensed providers in the District, this one-stop, web-based tool features more than 1,200 classroom and administration resources, plus discounts at leading vendors. The Foundation partnered with OSSE, CCA For Social Good and local early learning experts to create the site.



“Early Childhood Share DC is a game-changer for the District. Together, we have charted new territory and created a more streamlined path to quality for D.C. providers. It would not have been possible without the authentic public/private partnership between OSSE and the Bainum Family Foundation.”

Elizabeth Groginsky
Assistant Superintendent
of Early Learning
OSSE



Infant classroom at QIN participant, Big Mama's Children's Center in Ward 8

PRACTICE: Increasing Availability of New High-Quality Seats

The Foundation is helping two established nonprofits build new facilities in the District of Columbia's Ward 8.



Bright Beginnings, which provides early childhood education and comprehensive services to homeless children and their parents, is building a second center that will create an additional 100 high-quality early learning seats. Groundbreaking took place in March 2016, and the new center will open in early 2018.



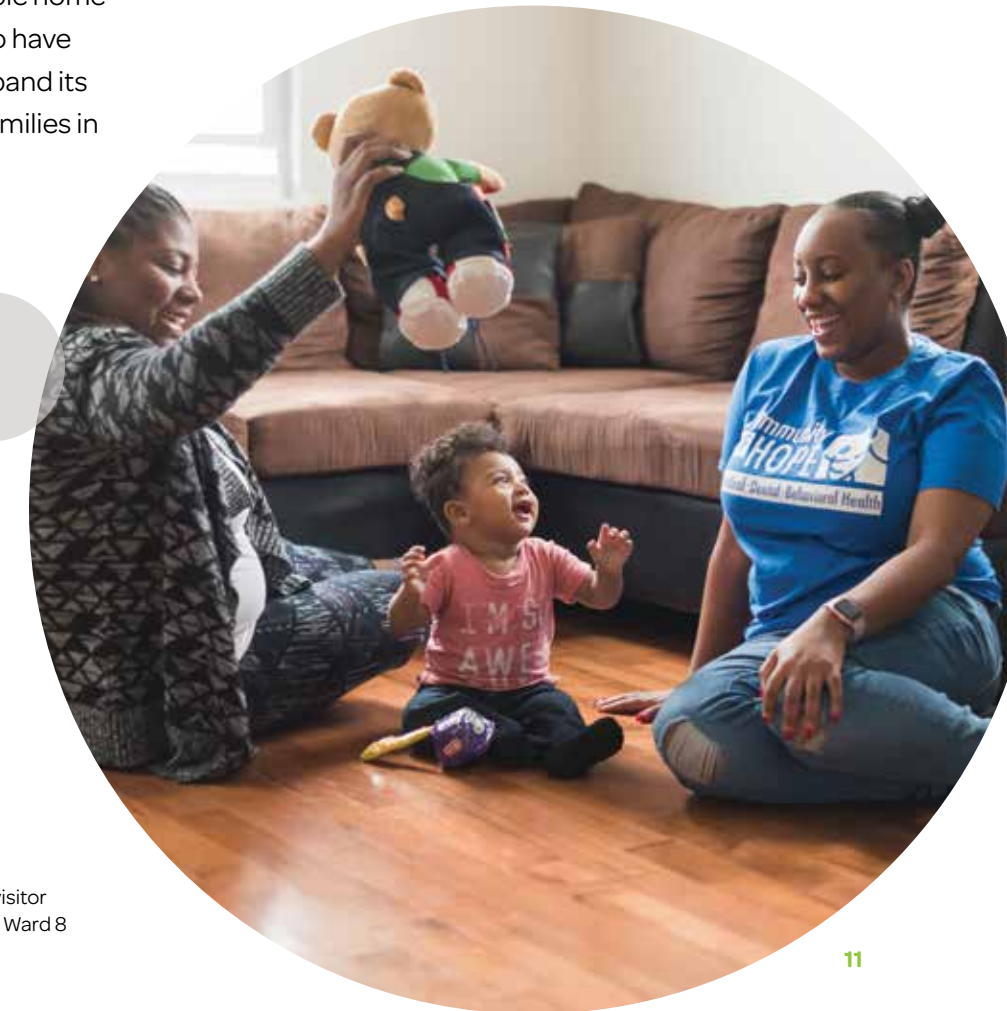
Martha's Table, which works to increase access to education, food and opportunity across the District, will open a new headquarters in 2018. It will house

an education facility for early childhood (with 100 seats) and out-of-school-time programming, a parent engagement space and an industrial kitchen.

PRACTICE: Increasing Health Supports for Families

High-quality home visiting programs can improve child health and development. But in the District of Columbia, there is no coordinated intake process to connect families with resources, and there aren't enough slots to meet the needs of all families that could benefit from these services.

The Foundation is working with the **DC Home Visiting Council** to develop a sustainable home visiting program for the District. We also have invested in **Community of Hope** to expand its home visiting program to serve more families in Wards 7 and 8.



Community of Hope home visitor with a mother and her son in Ward 8

POLICY: Building a Birth-to-Three Policy Alliance

In 2016, the Foundation launched a **Birth-to-Three Policy Alliance** that involves the District of Columbia's leading children's policy, advocacy and service organizations.

Together, we are working to increase access to quality, comprehensive early childhood services and other supports for infants and toddlers and their families, and ensure that health, education, early learning and human services systems work in a coordinated fashion to improve outcomes for young children.

The Policy Alliance successfully supported two policy advances in the District in 2016: paid medical and family leave for private-sector workers, and higher child care subsidy reimbursement rates for providers that are in the Quality Improvement Network to better reflect the cost of providing care.



RESEARCH: Measuring Program Implementation and Outcomes

A critical aspect of our knowledge building is **program evaluation**. For the past two years, the Foundation has funded the implementation evaluation of the Quality Improvement Network (QIN), an initiative of the District of Columbia's Office of the State Superintendent of Education (OSSE) to convert existing early learning seats to high quality.

In partnership with the W.K. Kellogg Foundation, over an additional three years, we will fund an outcome evaluation to assess the impact of the QIN on participating children, families, providers and D.C.'s early childhood system.



Toddler classroom at QIN participant, Big Mama's Children's Center in Ward 8

Partnerships in Wrap-Around Support

For children to thrive and develop to their full capacity, high-quality academics are essential but not sufficient. That's why our goal, by 2020, is to provide wrap-around support annually for 2,000 elementary school students (pre-K through third grade) in the District of Columbia's Wards 7 and 8 to improve their social and emotional well-being and their nutrition. Our work addresses:

Practice

Developing and implementing innovative approaches to school-led partnerships with high-quality wrap-around service providers

Policy

Working with advocates and policymakers to adopt promising and proven standards and practices for low-income students in D.C.

Research

Partnering with researchers in fields such as social-emotional development, mental wellness, nutrition and summer learning to identify innovative approaches and evaluate the services we provide

Planting fields at Bainum Foundation Farm



PRACTICE: Improving Access to Healthy Food

The Bainum Foundation Farm seeks to improve access to healthy food for 1,000 families with children in Wards 7 and 8 by 2020.

In partnership with **Arcadia Center for Sustainable Food & Agriculture**, the Foundation spent the past year creating a sustainable, regenerative approach for the Farm. We also supported **Arcadia's Mobile Market program** (rolling farm stands stocked with healthy foods). The Farm's first crops will be planted and harvested in 2017, and a portion of the produce will supply the Mobile Markets.

"Children learn more, parents parent better, workers work better, and everyone feels, sleeps and operates better on a diet of wholesome, nutritious food."

Pamela Hess
Executive Director
Arcadia Center for Sustainable Food & Agriculture



Arcadia Mobile Market farm stand

PRACTICE AND RESEARCH: Identifying a Model for School-based Mental Wellness

The Foundation is researching sustainable best practices for school-based mental wellness services. During the 2015/2016 school year, the Foundation partnered with **DC Prep and Ingenuity Prep** in the District of Columbia. Teachers at both schools received specialized training. At DC Prep, teachers identified students to receive additional care from psychiatrists at **Children's National Medical Center**, while at Ingenuity Prep, a school social worker was employed to support staff in linking students with services. This work will culminate in a demonstration project for enhancing mental wellness services that will be launched in 2017/2018.



Partnerships in Knowledge Building

To provide the greatest good for the greatest number of children and families, we must ensure that all Foundation staff and partners incorporate best practices in education and child development into our work. Our work during this year focused on **Community Engagement** to foster authentic engagement with communities to understand their strengths, needs and priorities.



Engaging Parents to Strengthen Families

We invest in proven parent-engagement tools to help children and families reach their full potential. One such tool is the Parent Café, developed by our partner **Be Strong Families**. This nationally recognized model facilitates a series of small-group discussions around five protective factors shown to mitigate the negative impacts of trauma and fortify families: parental resilience, social connections, concrete support in times of need, knowledge of parenting and child development, and social end emotional competence for children. In 2016, we hosted a Parent Café Training Institute for our partners in the District of Columbia, extending the impact of our investment in this valuable tool.



Parent Café Training Institute in D.C.

Seventh-day Adventist Education Initiatives

Freedom School program at Baltimore Junior Academy

Supporting Seventh-day Adventist Education

Reflecting the commitment of our founder, Stewart Bainum, to faith-based education, the Foundation continues to support **Seventh-day Adventist (SDA) schools**. That support once consisted largely of providing scholarships to allow students to attend faith-based schools (and we continue to work with 18 scholarship schools nationwide). Now, our support focuses on knowledge sharing and capacity building to help schools excel, including:

ACE Leadership Academy, which is developing effective leaders for faith-based schools

Investments to help schools enhance their operations, increase their fundraising ability and make facility improvements

A K-12 instructional framework project for language arts, which is being piloted at a partner school before being made broadly available to SDA schools

Sponsorship of the Children's Defense Fund's Freedom School program for 100 K-8 students at Baltimore Junior Academy during summer 2016



ACE Leadership Academy
graduating class



Family Philanthropy



Legacy of Our Founders

When Stewart Bainum left his faith-based boarding school in Mount Vernon, Ohio, at the height of the Great Depression, his intention was not to build a legacy. He simply needed to earn money to complete his high school education, and jobs were scarce in Ohio. So with \$3 in his pocket and a cardboard suitcase in his hand, he hitchhiked 400 miles to Washington, D.C., where he found work as a plumber's assistant.

He earned enough money to graduate from high school in Ohio in 1938, then returned to D.C., where the persistence he showed as a young man propelled him to a successful career in business. After first starting a plumbing business, he built a real estate development company and founded **ManorCare**, a universally acclaimed nursing home company. He entered the hospitality business in 1957 when he built his first hotel, and then was instrumental in establishing **Choice Hotels International**, one of the world's largest hotel franchising companies.

Mr. Bainum's success in business was paralleled by a lifelong commitment to philanthropy. He never forgot his struggle to obtain an education. In 1968, he and his wife, Jane, created a foundation to provide educational opportunities and other support to children living in poverty, and it has affected the lives of thousands of children over the years.

That organization exists today as the **Bainum Family Foundation**, and four generations of Bainum family members are now involved in continuing this legacy through a range of family philanthropy initiatives at the Foundation.



Jane and Stewart Bainum

GLOBAL IMPACT: Supporting Education in Developing Countries

One family philanthropy initiative addresses education issues – including early childhood development, early primary, and education for women and girls – in some of the most difficult corners of the world. We do this by partnering with respected global organizations that support vulnerable children in developing countries.

Firelight Foundation strengthens communities in Africa that have been heavily affected by poverty, HIV and AIDS, working to support the health, resilience and education of children. With the Foundation's help, Firelight supports more than 2,100 children ages 0 to 10 by assessing and improving the quality of community-based early childhood development centers in Malawi.

Global Fund for Children (GFC) works to transform the lives of children on the edges of society, including trafficked children, refugees and child laborers. With the Foundation's help, GFC strengthens community-based organizations that provide early childhood development programs to nearly 3,300 children ages 0 to 5, primarily in Kenya, Tanzania and Zambia.



Children supported through Firelight Foundation, left, and Global Fund for Children, above

GLOBAL IMPACT: Supporting Education in Developing Countries

The International Rescue Committee (IRC) supports children, youth and adults whose lives are shattered by conflict and disaster. IRC uses the Foundation’s support to improve early childhood programming and wrap-around supports for 3,600 children ages 3 to 10 in six refugee camps in Ethiopia.

Save the Children invests in childhood, giving children around the world a healthy start, the opportunity to learn and protection from harm. Save the Children has used the Foundation’s funding in Uganda to develop a **“Boost for the Youngest”** toolkit to help parents and caregivers support the cognitive, social and emotional growth of young children, ultimately reaching 5,000 children.



Children and parents supported through Save the Children

LOCAL IMPACT: Fighting Hunger and Poverty in D.C.

Another fund sponsored by the Bainum family focuses on eliminating the direct and indirect causes of food insecurity and poverty in the Washington, D.C., area. The fund provides general operating support to a number of organizations, while supporting specific programs at others.

One example is the **DC Central Kitchen Culinary Job Training program**. This intensive 14-week program prepares unemployed, underemployed, previously incarcerated persons and homeless adults for careers in the food service industry.



DC Central Kitchen Culinary Job Training program

Board of Directors and Senior Leadership

Board of Directors

Barbara Bainum, LCSW-C, Chair

Bruce Bainum, PhD

Steve Bumbaugh

Kenny Emson

Alexander Froom

Charles A Ledsinger, Jr.

Joan Lombardi, PhD

Maura Marino

Scott Renschler, PsyD, Vice Chair

Senior Leadership

Barbara Bainum, LCSW-C, Chair of the Board, CEO and President

Mark Birmingham, Chief Financial Officer and Treasurer

Rozita La Gorce Green, Chief Strategy Officer and Secretary

David Daniels, Vice President, Operations and Organizational Effectiveness

Clara Northington, Vice President, Human Resources

Noel Bravo, Senior Director, Program Development

Miriam Calderon, Senior Director, Early Learning

Rebecca Cisek, EdD, Senior Director of Talent and Organization Development

Angela Deeds, Senior Director, Finance and IT

Ann Egan, Senior Director, Communications

Leila Otis, Senior Director, Bainum Foundation Farm

Nisha Sachdev, DrPH, PsyD, Senior Director, Evaluation

Connect With Us

Stay up to date on Bainum Family Foundation news, programs and partnerships.

Check Out Our Blog

Visit weekly to learn about our initiatives and impact, and get great insights from our experts. Sign up to get our blog feed delivered directly to your inbox.

bainumfdn.org/blog

 @BainumFdn

Follow Us on Social Media

 [bainumfdn](https://www.facebook.com/bainumfdn)

 [@bainumfdn](https://www.instagram.com/bainumfdn)

 [Bainum Family Foundation](https://www.linkedin.com/company/bainum-family-foundation)

 [@BainumFdn](https://twitter.com/BainumFdn)





7735 Old Georgetown Road
Suite 1000
Bethesda, MD 20814
(240) 450-0000
bainumfdn.org

